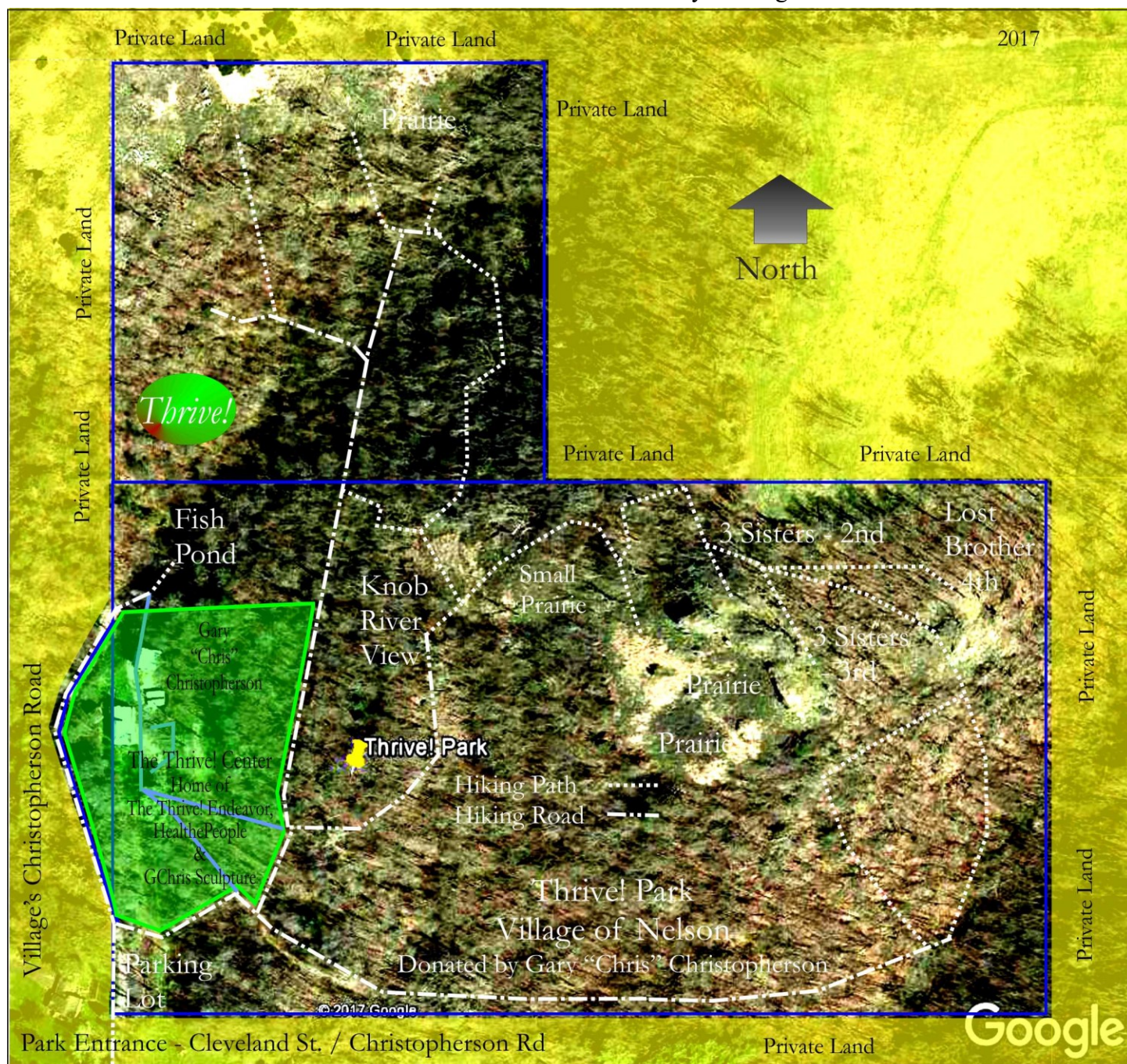


New Thrive! Park [Nelson, WI] – Open for Public Hiking/Walking
 Maps available @ Cleveland St./Christopherson Rd Entrance and www.ThrivePark.org
 Leave no trace. Please take out what you bring in.



More information (downloadable map, photos, prairie restoration, description) @ www.ThrivePark.org

Thrive! Park is east of Highway 35 in Nelson (WI). Take Cleveland Street toward bluffs. As you enter woods, turn left on Christopherson Road. Just after turn, there is a parking lot on right to park. Park entrance and road/trail markings are just left of parking lot.

As shown on map, Park consists of hiking roads (marked in white) going along bluff side and back through valley. Also, there are several hiking trails (marked in white) that go to restored bluff and prairie areas and can be accessed off the main hiking roads.

Thrive! Park is a public park. No hunting or trapping since this is a park and wildlife safety area. No vehicles (motorized or non-motorized) except for handicapped access. Please don't trespass on Park neighbors' private land.

Responding to visitors' questions, The Thrive! Center, home to GChris Sculpture, HealthePeople, & The Thrive! Endeavor, is just outside Park's western edge. To visit, best to contact Chris first at GChris@GChris.com or 301-318-3760. More info at www.GChris.org, www.HealthePeople.com and www.ThriveEndeavor.org

Thrive! Park of the Village of Nelson and donated by Gary "Chris" Christopherson